

MOMA

股票代码: 1107.HK
MO MA 當代置業
科技建筑 品位生活 爱我家园行动



Visit to Denmark

2-3 March 2018

Compiled by

IEN Consultants

Energy efficient and Green Building Consultants
www.i-en-consultants.com

Schedule (Friday)

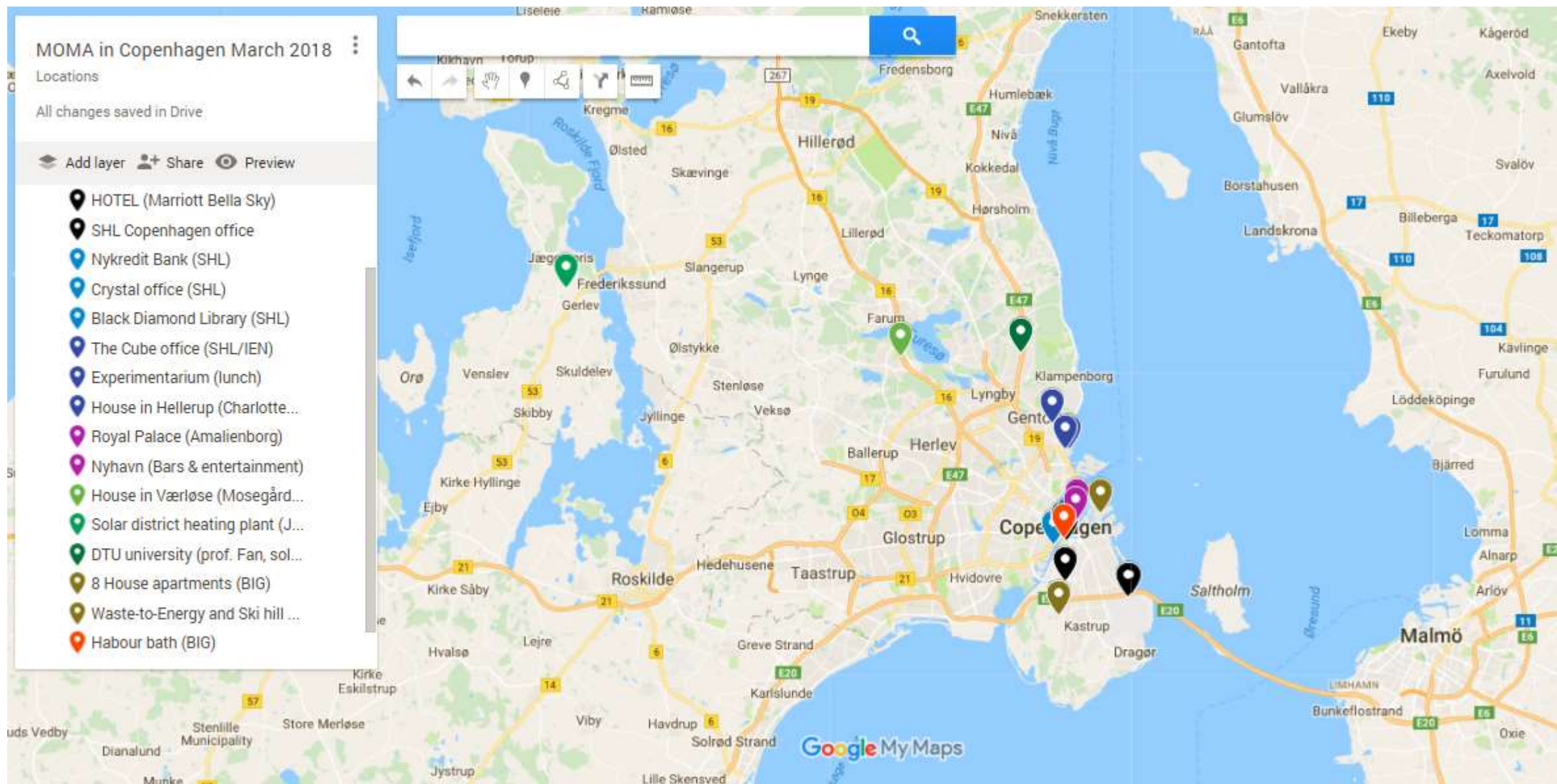
Day	Activity	Person in charge
Friday 1 March 2018	9:30 Meeting with SHL (sign agreement)	Rasmus (SHL)
	10:30 Walking tour with SHL to see SHL projects: - NyKredit office - Crystal office - Black Diamond library	Rasmus (SHL)
	13:00 Lunch at Hellerup Sejlklub [20 min drive to get there] Ms. Lone Feifer will present (14:00) on Active House	MOMA
	14:00 Meeting at restaurant with Active House Ms. Lone Feifer (Head). <i>NB. Need to buy ticket to enter</i>	Lone (Active House)
	15:00 Visit house (Active House), Hellerup [12 min drive]	Lone (Active House)
	16:00 Visit The Cube office by SHL & IEN [12 min drive]	Gregers (IEN)
	17:00 Sightseeing [20 min drive] Royal Palace (Amalienborg), Little Mermaid, Nyhavn (restaurants)	Gregers (IEN)
	EVENING (no program)	

Schedule (Saturday)

Day	Activity	Person in charge
Saturday 2 March 2018	10:00 Visit to Danish House retrofitted in compliance with Active House in Værløse [30 minute drive from Hotel]	Gregers (IEN)
	12:00 Visit Solar District Heating plant in Jægerspris with Assoc. Prof. Fan Jianhua (Denmark's Technical University, DTU). We pick prof. Fan up on the way in Virum. Address of Solar District Heating is: Jægerspris Kraftvarme, Håndværkervej 9, 3630 Jægerspris [60 minute drive]	Fan (DTU)
	12:45 Lunch	tbc
	14:30 Presentation by Assoc. Prof. Fan Jianhua (DTU) about renewable energy (solar thermal) for district heating of houses	Fan (DTU)
	16:00 Figure 8 apartment complex (BIG). See from outside only	Gregers (IEN)
	17:00 Waste-to-Energy plant & Ski Hill (BIG). Combined district heating & skiing slope. See from outside only (link)	Gregers (IEN)
	EVENING (no program)	

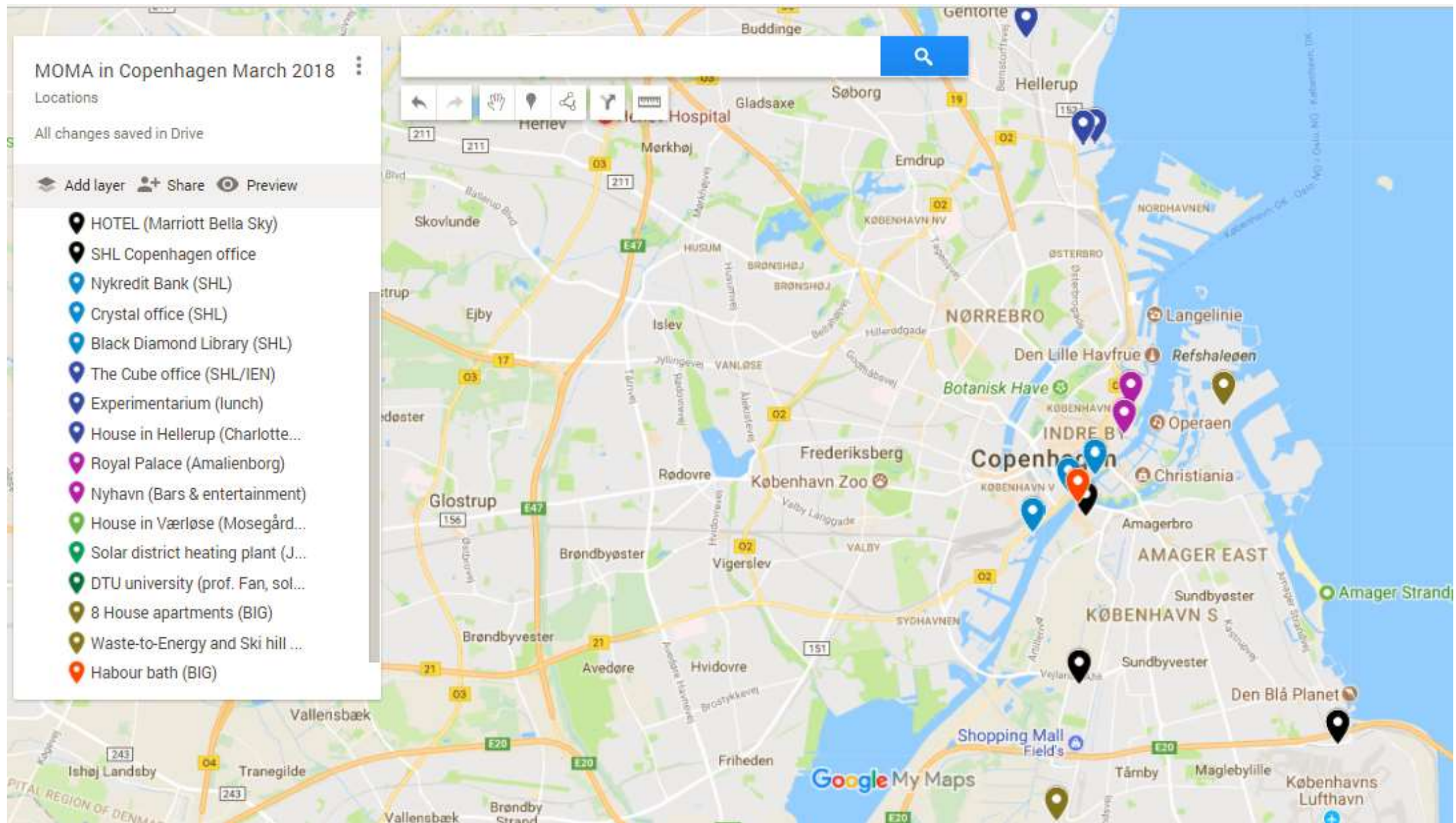
Optional Schedule (Sunday)

Day	Activity	Person in charge
Sunday 3 March 2018	8:00 Winter bathing in the Copenhagen harbour at Havnebadet (BIG)	Gregers (IEN)
	<div>  <p>Summer (June – August)</p> </div> <div>  <p>Winter (Dec - March)</p> </div>	
	11:30 MOMA flies off to Germany	



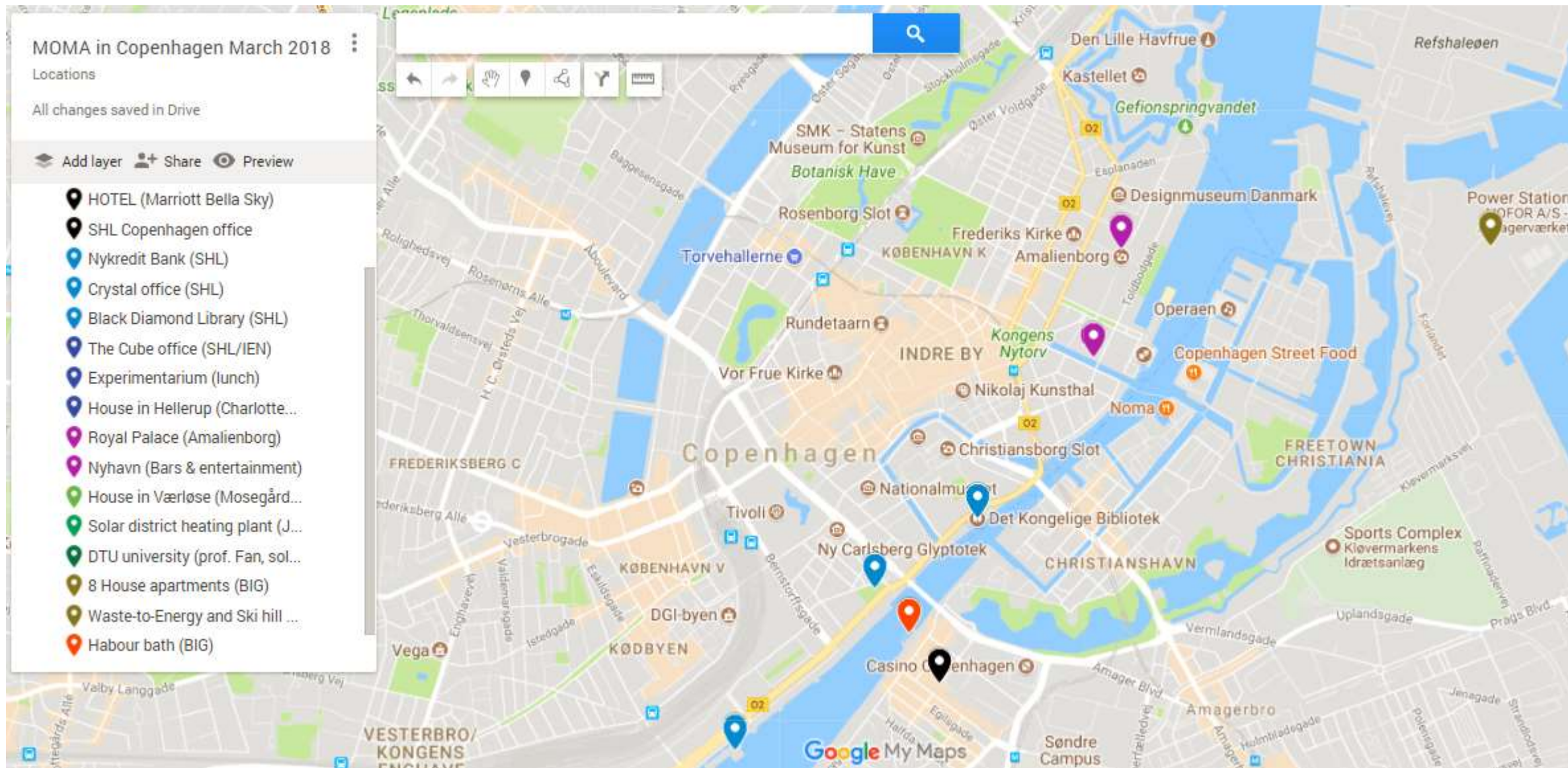
All visits listed in chronological order.

Map link (<https://drive.google.com/open?id=1ykELBZ-qJFkNuUaJqM4yK52sGMcOQal-&usp=sharing>)



Copenhagen visits only, listed in chronological order.

Map link (<https://drive.google.com/open?id=1ykELBZ-qJFkNuUaJqM4yK52sGMcOQal-&usp=sharing>)



Copenhagen zoomed in, listed in chronological order.

Map link (<https://drive.google.com/open?id=1ykELBZ-qJFkNuUaJqM4yK52sGMcOQal-&usp=sharing>)

Photos from MOMA Study Trip

2-3 March 2018 in Copenhagen and the region

MOMA visiting The Black Diamond library
(den sorte diamant). Building by SHL.

2 March 2018
Copenhagen, Denmark



MOMA and SHL signing collaboration agreement

2 March 2018

Copenhagen, Denmark





MOMA visiting The Crystal office building (krystallen). Building by SHL.

2 March 2018, Copenhagen, Denmark

MOMA visiting The Cube office (former NCC HQ).
Building by SHL and IEN Consultants.

2 March 2018
Copenhagen, Denmark



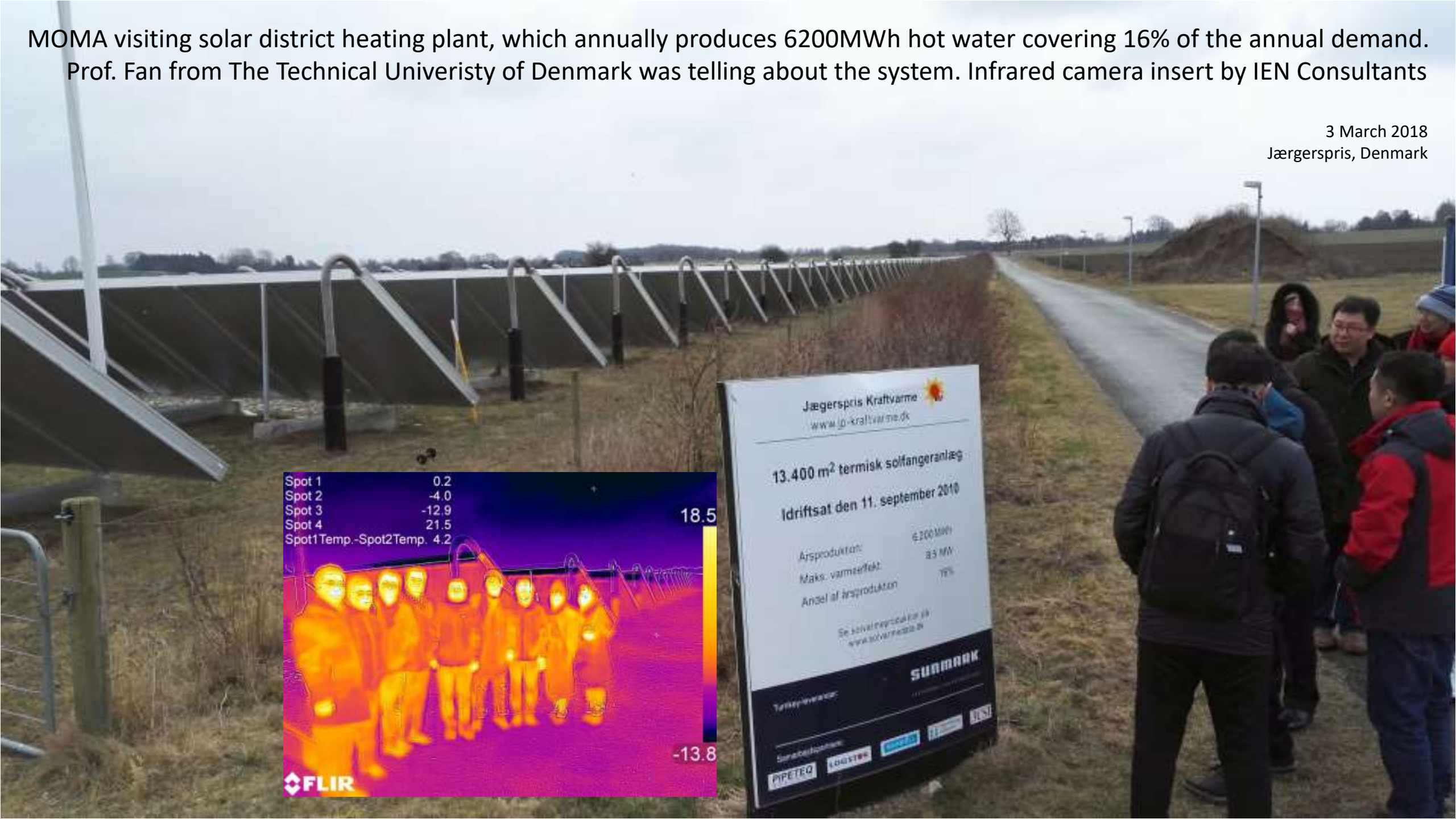


MOMA visiting The Cube office, the former NCC HQ. This is the first big office building in Copenhagen (late 1990s) to fully rely on natural ventilation by automatic opening and closing of the windows. The big atrium volume contains enough fresh air to close the windows for a few hours during the hottest hours in the summer. The splashing water fountain creates 'white noise' to block out disturbing office noise (conversations) traveling across the atrium. Building by SHL and IEN Consultants

2 March 2018, Copenhagen (Tuborg Nord), Denmark

MOMA visiting solar district heating plant, which annually produces 6200MWh hot water covering 16% of the annual demand.
Prof. Fan from The Technical Univeristy of Denmark was telling about the system. Infrared camera insert by IEN Consultants

3 March 2018
Jægerspris, Denmark



Jægerspris Kraftvarme 
www.jp-kraftvarme.dk

13.400 m² termisk solfangeranlæg

Idriftsat den 11. september 2010

Årsproduktion: 6.200 MWh
Maks. varmeeffekt: 85 MW
Andel af årsproduktion: 16%

Se solvarmeproduktion på
www.solvarmeproduktion.dk

SUNMARK

Teknisk leverandør:
Samarbejdspartner:
PIPETEQ LOGSTOR

MOMA visiting Velux retrofitted home in
Charlottenlund. The building ascribes to
the Active House principles of good indoor
environmental quality

2 March 2018
Copenhagen, Denmark





MOMA and IEN Consultants signing collaboration agreement

2 March 2018, Copenhagen, Denmark